

SPARE PARTS

for

R1 / R20

OE – Rotorspinning machines

HIMATEX Textil
Mühlweg 1
85088 Vohburg
GERMANY

Tel.: + 49 (0) 8457 – 935 959
Fax: + 49 (0) 8457 – 935 977

e-mail: himatex@himatex.de



H.205.41.30 Rotor D30 mm

H.205.41.32 Rotor D32 mm

H.205.41.35 Rotor D35 mm

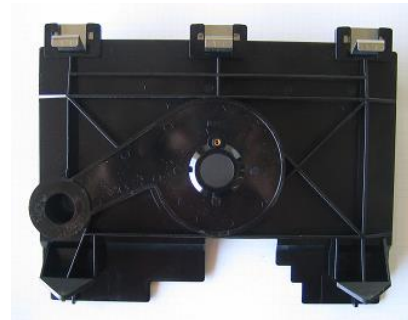
H.205.41.40 Rotor D40 mm

H.205.41.48 Rotor D48 mm

H.205.41.56 Rotor D56 mm



***different grooves and coatings available
or even without coating, can be decided on order***



H.205.31.2 Rotor housing with metal clamp



H.205.39.30 Face plate D30 mm R1

H.205.39.32 Face plate D32 mm R1

H.205.39.35 Face plate D35 mm R1

H.205.39.40 Face plate D40 mm R1

H.205.39.48 Face plate D48 mm R1

H.205.39.56 Face plate D56 mm R1



H.205.39.30.2 Face plate D30 mm R20

H.205.39.32.2 Face plate D32 mm R20

H.205.39.35.2 Face plate D35 mm R20

H.205.39.40.2 Face plate D40 mm R20

H.205.39.48.2 Face plate D48 mm R20

H.205.39.56.2 Face plate D56 mm R20



H.3300.67.01 Ceramic insert - Nozzle ceramic smooth D14

H.3300.67.02 Ceramic insert - Nozzle ceramic 4 grooves D14

H.3300.67.03 Ceramic insert - Nozzle ceramic 8 grooves D14

H.3300.67.03 Ceramic insert - Nozzle ceramic spiral D14

H.3300.67.04 Metal insert - Nozzle ceramic smooth D17

H.3300.67.05 Metal insert - Nozzle ceramic 4 grooves D17

H.3300.67.06 Metal insert - Nozzle ceramic 8 grooves D17

H.3300.67.07 Metal insert - Nozzle ceramic spiral D17

H.3300.67.08 Metal nozzle smooth D17

H.3300.67.09 Metal nozzle 4 grooves D17

H.3300.67.10 Metal nozzle 8 grooves D17

H.3300.67.10 Metal nozzle 16K boron AF 17 (screw)

H.3300.67.11 Nozzle ceramic smooth AF17

H.3300.67.12 Nozzle ceramic 4 grooves AF17

H.3300.67.13 Nozzle ceramic 8 grooves AF17

H.3300.67.14 Nozzle ceramic spiral AF17

H.3300.67.15 Nozzle ceramic smooth AF22

H.3300.67.16 Nozzle ceramic 4 grooves AF22

H.3300.67.17 Nozzle ceramic 8 grooves AF22

H.3300.67.18 Nozzle ceramic spiral AF22



H.3300.75.1 Cleaner f. tube and nozzle



H.205.42.1 Yarn guide tube soft twist R1



H.205.42.2 Yarn guide tube soft twist R20



H.205.42.4 Yarn guide tube R1



H.205.42.5 Yarn guide tube R20



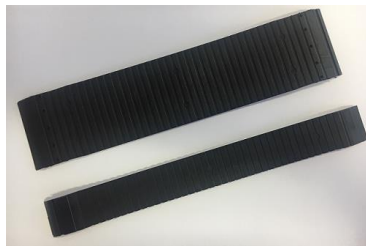
H.205.73.1 End piece f. yarn guide tube

H.225.73.1 Winding roller cyl. cpl.



H.1300.13.1 Rubber ring 50 mm

H.1300.13.2 Rubber ring 25 mm



H.1300.13.5 Rubber ring with clip 50 mm

H.1300.13.6 Rubber ring with clip 25 mm



H.2700.31.1 Transfer tail plate cyl. D54



H.2700.38.1 Package plate cyl. D54



H.2700.37.1 Bearing f. transfer / package plate



H.235.01.1 Package holder cpl.



H.235.01.9 Blade f. package holder



H.225.13.1 Waxing device cpl.



H.225.68.1 Cover f. waxing device

H.225.27.1 Motor f. waxing



H.225.31.1 Yarn monitor



H.225.31.5 Plastic window



H.225.31.7 Ceramic part top



H.225.31.8 Ceramic part bottom



H.225.20.1 Lever f. top roller

H.1300.89.1 Top roller cpl. with bearing



H.225.59.4 Yarn guide LW 1,3



H.225.37.4 Turn locking

H.225.33.4 Bearing



H.1300.42.4 Roller bearing



H.225.30.4 Yarn guide rod, plastic



H.225.58.4 Yarn guide rod, alu



H.225.28.4 Winding shaft cyl. with drilling cpl.



H.225.55.4 Delivery shaft



H.215.17.4 Opening roller shaft cpl.



H.2300.7.1 Tension roller



H.215.00.1 Holder + tape tension roller cpl.



H.225.04.5 Bearing f. winding a. delivery shaft



H.225.50.5 Ball bearing 30/55 x 28



H.210.19.1 Bearing f. delivery shaft



H.210.19.2 Bearing GLE 25



H.215.01.1 Bearing f. opening roller shaft



H.225.05.6 Coupling cpl.



H.210.06.5 Clutch f. delivery shaft cpl.



H.235.09.2 Valve f. package brake R1



H.205.72.1 Valve cpl. f. rotorcleaning R1



H.205.72.2 Valve f. rotorcleaning R1



H.240.10.1 Tube FUS



H.245.06.1 Valve FUS



H.205.71.1 Cover R1



H.205.19.1 Coverage R1



H.205.71.2 Cover R20



H.205.19.2 Coverage R20



H.205.84.4 Lever f. rotorcleaning R1

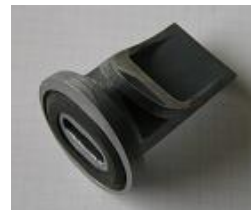
H.205.74.1 Plate R1



H.205.74.2 Plate R20



H.205.01.1 Handle f. cover



H.205.20.6 Insert f. opening roller house R1/R20



H.205.20.1 Opening roller house R1



H.205.20.2 Opening roller house R20



H.205.63.1 Suction FUS cpl. R1



H.205.24.1 Cover R1/R20



H.205.37.1 Feed plate R1



H.205.37.2 Feed plate R20



H.205.38.1 Holder f. feed plate



H.205.51.1 Feed funnel 3/10-8x20 cpl.



H.220.61.5 Lever f. rotorbearing cpl.

H.220.08.5 Holder f. spring



H.220.62.5 Spring

H.220.09.5 Tension rod



H.220.01.5 Rotor bearing



H.220.06.5 Bearing



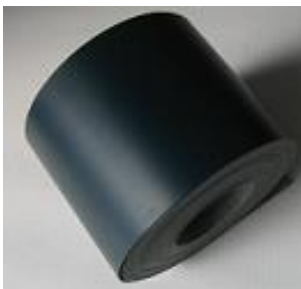


H.220.69.5 Holder f. rotorbearing



- H.220.53.1 Flat belt 20x53.550 10S
- H.220.53.2 Flat belt 20x58.450 11S
- H.220.53.3 Flat belt 20x63.350 12S
- H.220.53.4 Flat belt 20x68.230 13S
- H.220.53.5 Flat belt 20x73.125 14S

- H.220.54.1 Flat belt 10x53.250 10S
- H.220.54.2 Flat belt 10x58.150 11S
- H.220.54.3 Flat belt 10x63.000 12S
- H.220.54.4 Flat belt 10x67.900 13S
- H.220.54.5 Flat belt 10x72.760 14S



- H.200.41.1 Conveyor belt 100x51.700 10S
- H.200.41.2 Conveyor belt 100x56.675 11S
- H.200.41.3 Conveyor belt 100x61.630 12S
- H.200.41.4 Conveyor belt 100x66.550 13S
- H.200.41.5 Conveyor belt 100x71.525 14S

- H.200.23.1 Conveyor belt 140x53.850 10S
- H.200.23.2 Conveyor belt 140x58.800 11S
- H.200.23.3 Conveyor belt 140x63.800 12S
- H.200.23.4 Conveyor belt 140x68.750 13S
- H.200.23.5 Conveyor belt 140x73.700 14S



H.2000.28.1 Opening roller OB20

H.2000.28.2 Opening roller OS21

H.2000.28.3 Opening roller OS21-6

H.2000.28.4 Opening roller OB20-4

H.2000.31.8 Wharve



H.2000.30.8 Bearing f. opening roller



H.2000.28.9 Tool f. opening roller house clip



H.2000.28.8 Clip f. opening roller house



H.230.09.1 Air flap



H.205.55.9 Switch element



H.200.13.9 Direction control valve 3/2

Electronic Service

We can offer complete IPC and spare parts for them

**Exchange – or repair service
on all electronic components for R1 or R20**

**Components, such as section electronic boards,
CPU's or I/O's from the electrical panel or robot,
which have been sent in for us to repair,
are as good as new again**

**In addition, we can also offer you an
“on location service“ through our very experienced
Service Technician for troubleshooting and fault clearance.**

**This service involves the following machinery
HT04, RU11, RU04 – RU14-A, R1, R20, RSB 51 – 951 and D30.**

himatex@himatex.de